



Duke Road, London, W4 2DF

Guide Price £1,750,000

WHITMAN & CO.

SALES · LETTINGS · COMMERCIAL

- Fully extended period property
- Open aspect west facing garden
- Four beds/three baths
- Sought after road in the Glebe Estate
- Double reception room and full width kitchen/breakfast room
- Close to numerous amenities

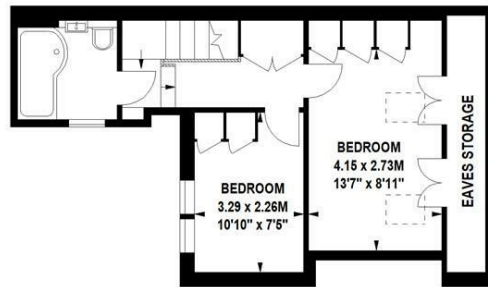
Tenure - Freehold
Local Authority - Hounslow
Council Tax - Band F

THE PROPERTY

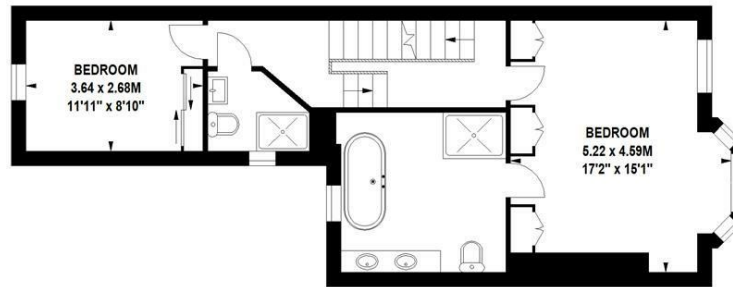
A superb fully extended period property located on this sought after road in the ever popular Glebe Estate benefitting from excellent proportions and an open aspect west facing garden. The house is one of the larger houses on the Glebe Estate with higher ceilings and wider rooms than average. The accommodation totalling 1679 sqft comprises a lovely double reception room with bay window and fireplace, full width kitchen/breakfast room with bespoke kitchen and bifold doors onto the garden, open aspect west facing garden, stunning master bedroom suite with full width bedroom and large ensuite bathroom with bath and separate shower, three further double bedrooms, two further bathrooms, extensive built-in storage, eaves storage, period features. Located within a short walk of Chiswick High Road's shops, cafes and restaurants. Transport links include Turnham Green station, local bus routes and the A4/M4 for routes in and out of London.

Duke Road, W4

Approximate gross internal area
155.98 sq m / 1679 sq ft



Second Floor



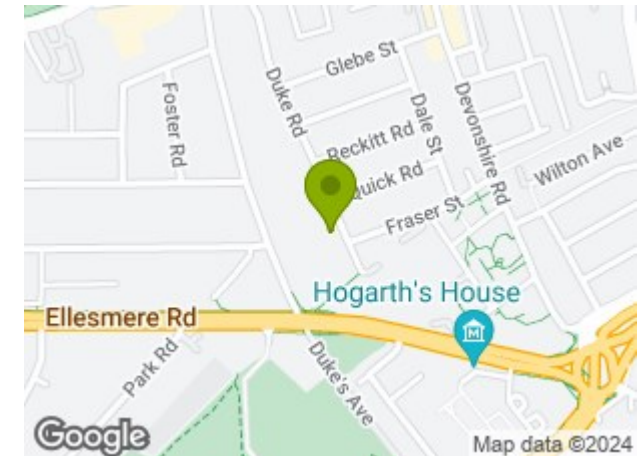
First Floor



Ground Floor

Not to scale, for guidance only and must not be relied upon as a statement of fact.
All measurements and areas are approximate only

SITUATION



5-7 Turnham Green Terrace, Chiswick, London, W4 1RG

Tel 020 8747 8800

E-mail sales@whitmanandco.com

Website www.whitmanandco.com